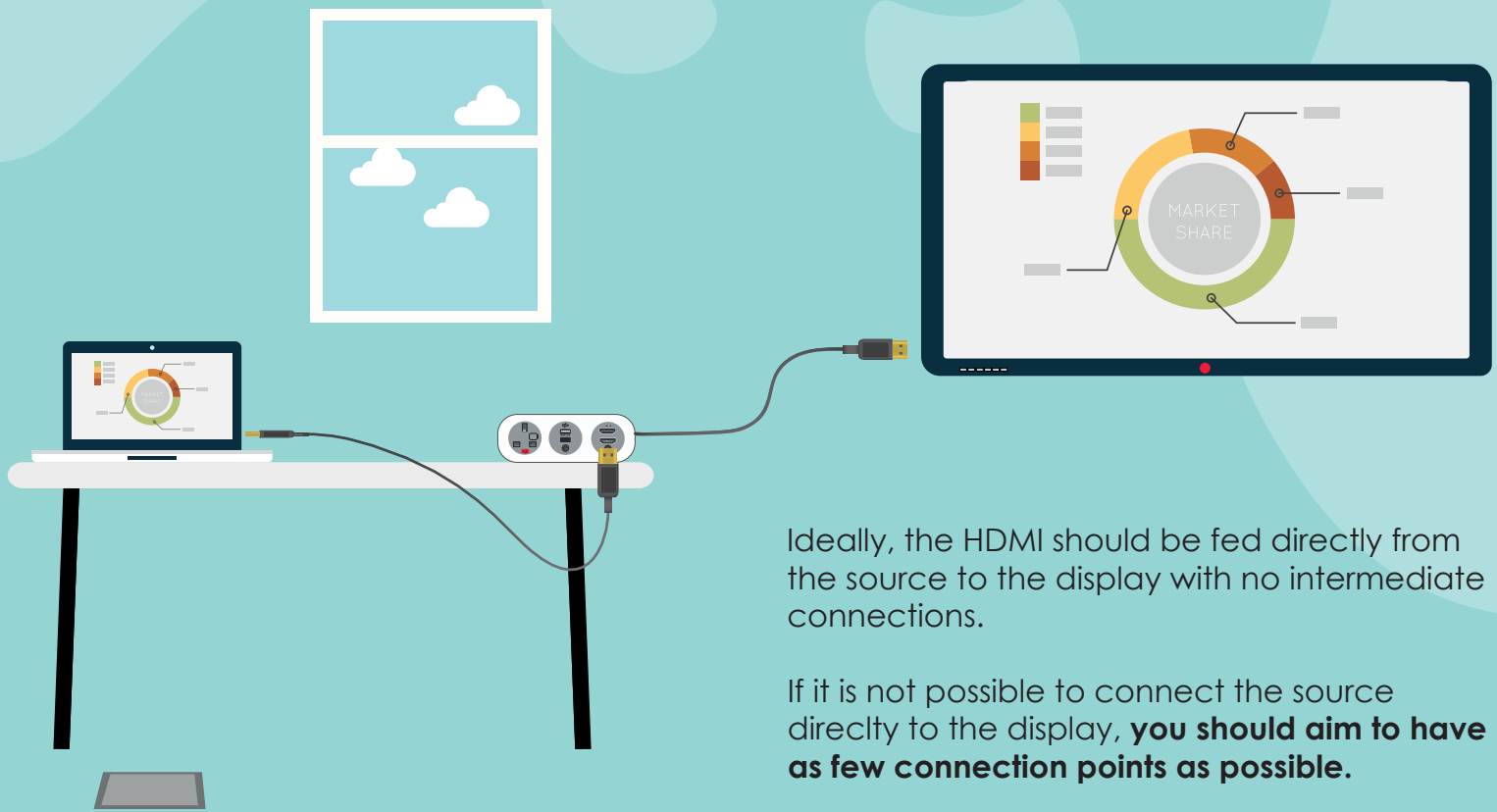


HDMI HELP GUIDE FOR SIGNAL ISSUES



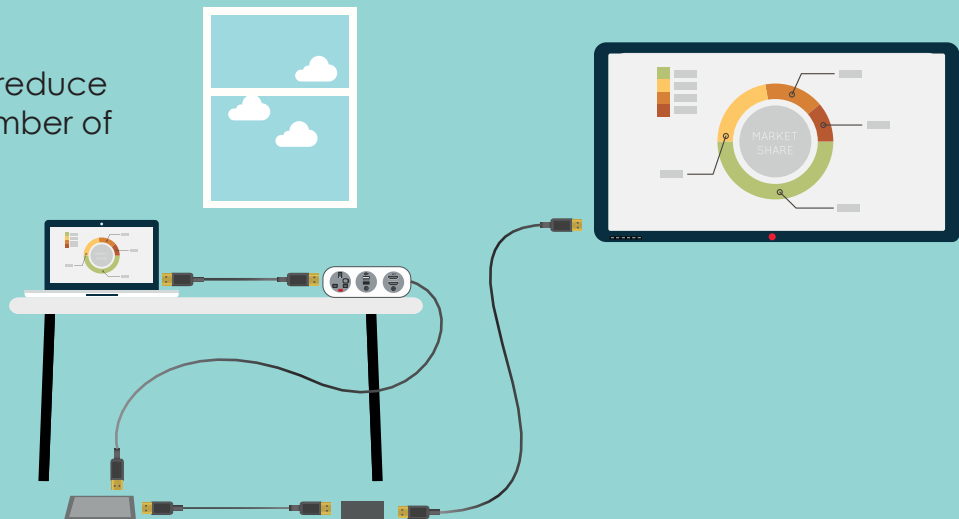
Ideally, the HDMI should be fed directly from the source to the display with no intermediate connections.

If it is not possible to connect the source directly to the display, **you should aim to have as few connection points as possible.**

Of course, it may be impossible to reduce the cable length or reduce the number of connections.

If that is the case, call our customer support team to enquire about an **HDMI repeater.**

HDMI repeaters can increase the signal up to 30m depending on how many connections there are.



HDMI repeater



oelectrics.co.uk
01924 367255

oelectrics
always innovating

HDMI HELP GUIDE FOR SIGNAL ISSUES

**CABLE LENGTH + CONNECTIONS =
POOR HDMI SIGNAL**

Multiple connections between the output device (laptop) and the display (TV) combined with overall cable length, can cause the HDMI signal to degrade.



**A HDMI signal
can degrade if
numerous
connections are
added**

Multiple connections between the source (laptop) and the display (TV) combined with overall cable length may cause the HDMI signal to degrade.

Ideally, the length of the HDMI cable from source to display, should be 1m. However, depending on how many connections there are within the cable, the signal can reach up to 10m in cable length.

oelectrics.co.uk
01924 367255

oelectrics
always innovating

HDMI HELP GUIDE FOR SIGNAL ISSUES

Step 1

Feed the HDMI directly from the source to the display, with no intermediate connections.

If there is now a signal, either the cable length or the number of connections was at fault. Call OE customer support to enquire about a =nHDMI repeater.

If there still isn't a signal please contact your IT department.

Step 2

Now, add the OE unit into the connection. If there is still a signal this demonstrates that the OE unit isn't at fault.

If there is now no signal, it is either because of the cable length or the number of connections deteriorating the signal.

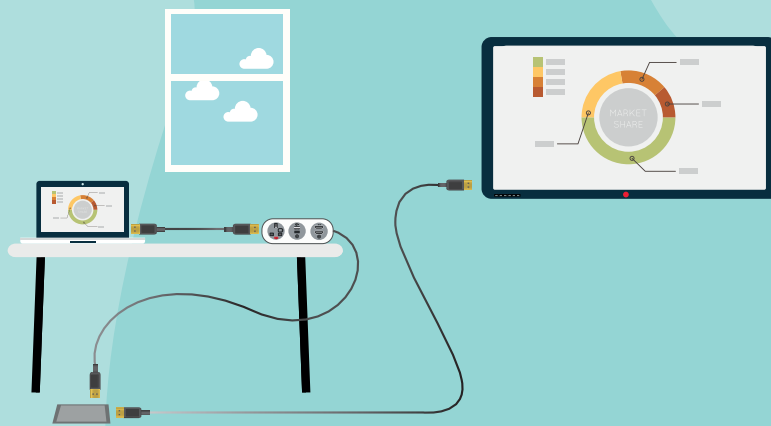
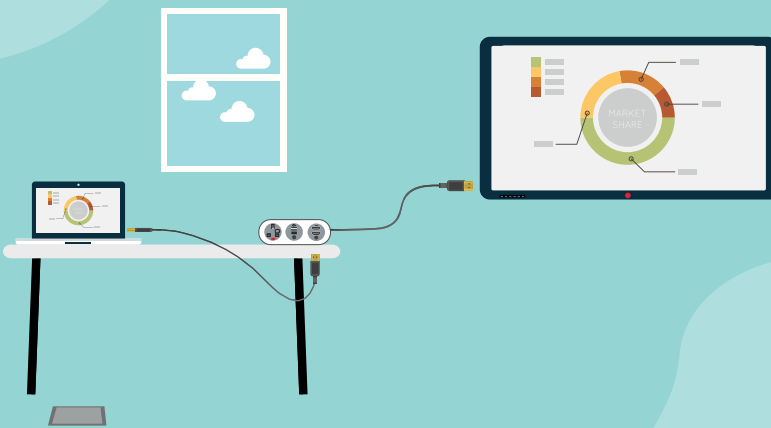
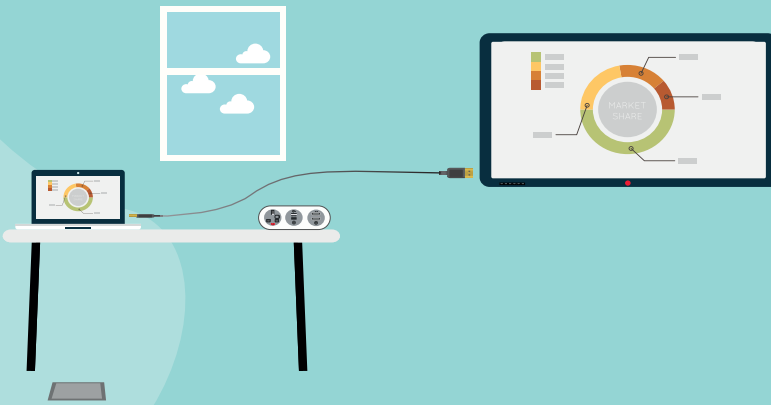
Step 3

If it is necessary, connect the remaining connections.

If there is no signal we advise you to inquire about an HDMI repeater from OE Electrics. We suggest adding an HDMI repeater to improve the signal that has degraded due to the cable length and number of connections.

Step 4

Add a HDMI signal booster.



oeelectrics.co.uk
01924 367255

oeelectrics
always innovating