

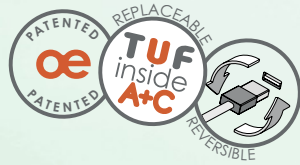


PULSE “floats” above the work surface giving it less visual weight and making it a great choice in today’s “less is more” office environment.

A stylish clamp-on power unit, Pulse’s flexible modular construction makes selecting your ideal power, USB, and data options a breeze.

With numerous interchangeable mounting options, PULSE is designed to be a designers’ go-to. Choose between on-desk, under-desk, screen, or partition mounting options. Better still, Pulse can be relocated around the workspace simply by changing mounts.

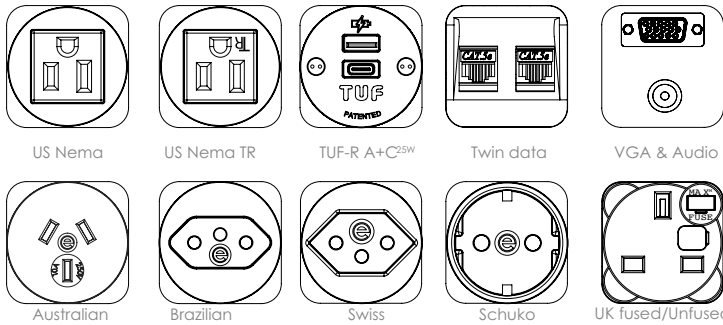
Available in white or black as standard, eight custom options can be ordered, or select your very own RAL color to match your furniture.



UNIQUE SELLING POINTS:

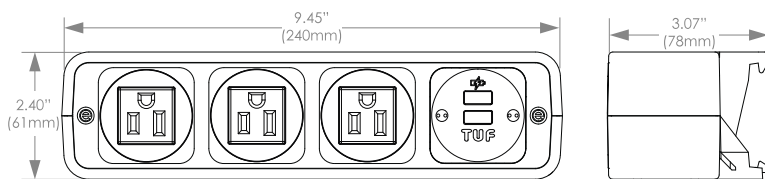
- “Floats” above the surface
- Numerous mounting options above or below the work surface
- Choice of AC power sockets, TUF-R A+C 25W USB charger, Data/AV connections
- 2 standard and eight specialty colors, or choose your special RAL color

Available Modular Components:

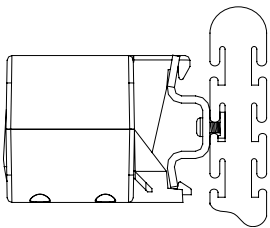


See www.oeelectrics.com for full list of available [modular components](#).

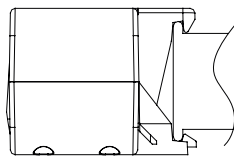
Dimensions:



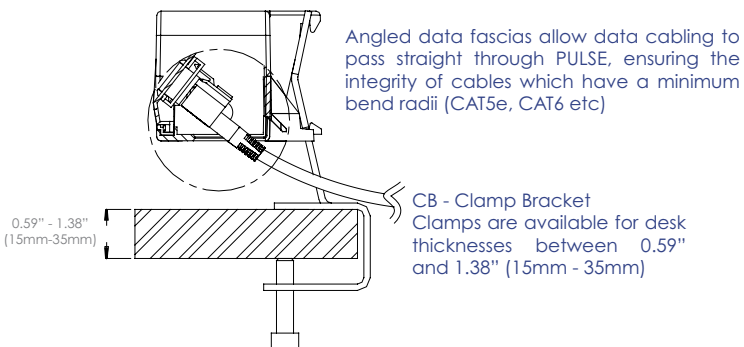
Standard Mounting options:



PTR* - Panel Mounting
Standard tool rail brackets are available.

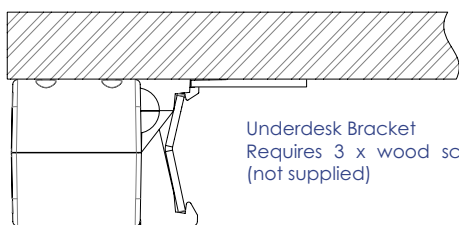


HTC* - HT Beam Mounting
Suitable for fixing to HT Beam.



Angled data fascias allow data cabling to pass straight through PULSE, ensuring the integrity of cables which have a minimum bend radii (CAT5e, CAT6 etc)

CB - Clamp Bracket
Clamps are available for desk thicknesses between 0.59" and 1.38" (15mm - 35mm)



Underdesk Bracket
Requires 3 x wood screw (not supplied)

PCB	Clamp Bracket 0.59 - 1.38" (15mm - 35mm)
PEC	Clamp Bracket (Extended) 1.45 - 2.17" (38mm - 55mm) ⁺
PLC	Clamp Bracket (Long-Reach) 0.59 - 1.38" (15mm - 35mm) ⁺
PTR	Panel Mounting*
HTC	HT Beam Mounting
UD	Underdesk Bracket

* Please call to confirm screen/tool rail compatibility

⁺Available on application

Configuration:

Populate PULSE's apertures with any combination of:
 - 53mm power sockets, or
 - TUF-R A+C 25W USB charger, or
 - Data/AV

Colors:

Standard - White frame & gray sockets (NEMA TR sockets - black only)
 Alternates - All black
 Custom-8 - Specialty Colors available on request



Power cable - black

Power and cord:

PULSE is wired as standard with a 32" 14/3 SJT cord to a male GST connector to be used with OE's [pluggable GST system](#).

Available by special order wired with a NEMA 5-15 cord and plug.

A starter cord is required for GST option: 72" or 108" 14/3 SJT cord with female GST connector, NEMA plug, and Integral OCP standard.

Data:

As well as soft-wired power, PULSE can accommodate soft wired data.

Using high quality in-line couplers with interchangeable system leads (or punch down sockets for site installed data) data cables can be changed "on-site" to suit individual office desk layout.

Where keystone sockets are ordered, our unique range of keystone adapters allow data outlets to sit flush and be color coded for easy circuit identification.

Mounting:

PULSE is designed to allow brackets to be changed on-site. Unless stated otherwise, PULSE can simply be moved (using the same bracket) or attached to another feature on the desk simply by changing the bracket.

Quality and Testing:

All PULSE units are manufactured using ISO9001 quality controlled components and practices, and are 100% tested before shipment

- Visual: Configuration and appearance
- Power sockets: Continuity, polarity, insulation & ground
- TUF-R A+C 25W USB charger: Fully function tested, as well as 4 hour "full-load" soak tested"
- Data & AV: 100% continuity tested; all orders are batch tested for performance compliance

"we test every pin in every socket in every module"

Certifications:

cETLus - UL962A / CSA22.2

International certifications available upon request

