



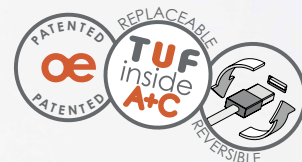
Bringing a European flair to clamp-on office power, PLY uses sustainable sourced birch ply to house an attractive desktop power module. A laminate face allows a customized finish - Alpine White or Fenix® Grigio Bromo (gray) matte laminate as standard - with customers' own laminate specification available on request.

PLY is available in both vertical 2-gang and horizontal 3-gang versions. Choose any combination AC power sockets, patented TUF-R A+C 25W USB fast charger, data, and A/V sockets.

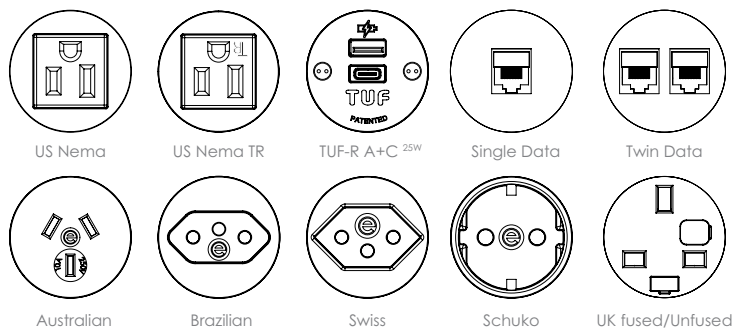
The included clamp bracket enables desk edge or through-desk mounting. The powder-coated, steel clamp has a two-piece design to allow installation through narrow openings when screens are tight to the desk edge.

#### UNIQUE SELLING POINTS:

- Eco-Friendly materials
- Patented TUF-R A+C 25W USB charging
- Choice of AC sockets & data solutions
- Fenix® Grigio Bromo gray or Alpine white
- Space-saving vertical & horizontal design
- Braided power cord option
- Desk-edge or through-desk mounting (through desk mounting suitable for narrow openings)

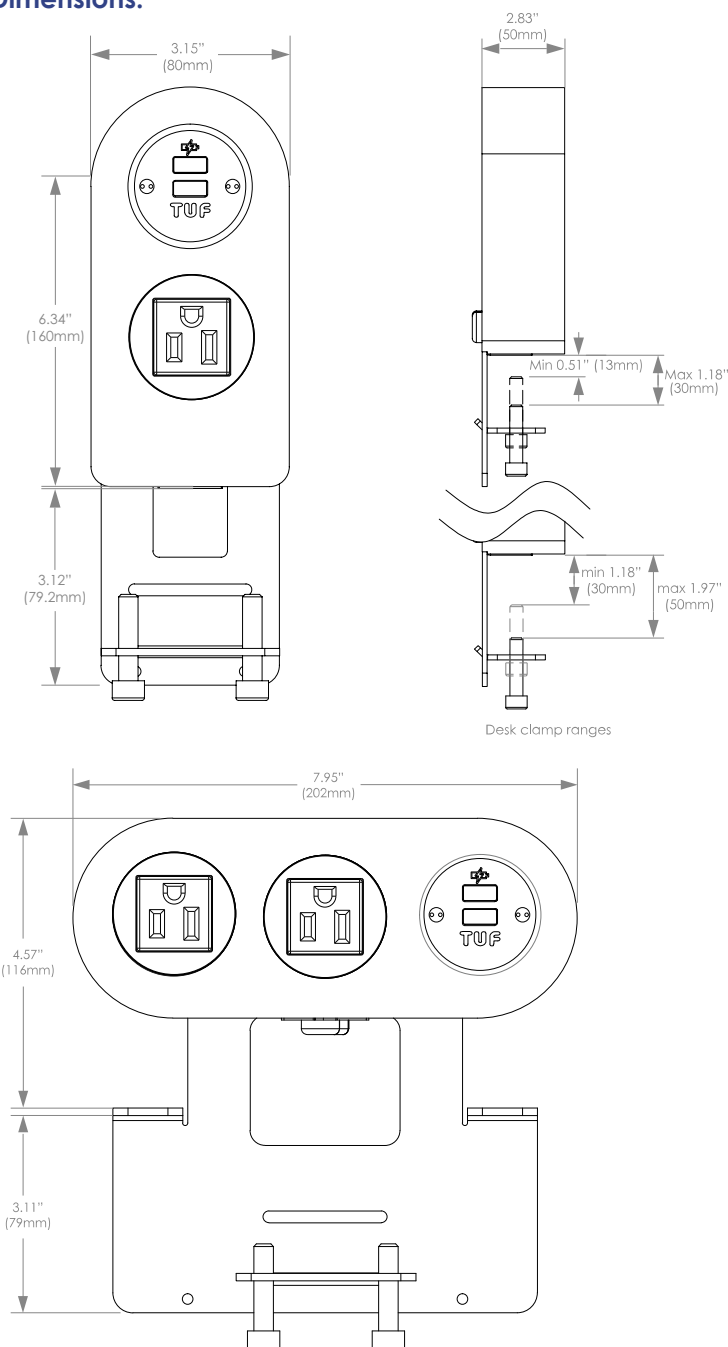


**Available Modular Components:**



See [www.oelectrics.com](http://www.oelectrics.com) for full list of available [modular components](#).

**Dimensions:**



**Configuration:**

Configure PLY's 42mm socket apertures with any combination of:

- AC power socket, or
- TUF-R A+C 25W USB charger, or
- Data/AV (Horizontal model only)

**Construction:**

Laminate faced birch ply body  
Polycarbonate socket inserts and fascias.  
Powder coated steel rear plate and bracket

**Colors:**

Fenix® Grigio Bromo (gray) or Alpine white  
Black socket inserts and fascias.  
Black RAL9005 rear plate and bracket  
Black cord  
Optional braided cord

**Power and Cord:**

PLY is wired as standard with a 32" 14/3 SJT cord to a male GST connector to be used with [OE's pluggable GST system](#). Available by special order wired with a NEMA 5-15 cord and plug.

A starter cord is required for GST option: 72" or 108" 14/3 SJT cord with female GST connector, NEMA plug, and Integral OCP standard.

**Data:**

Data/AV with 1.8m / 3m cords can be integrated into PLY on request. Alternatively, can be supplied with keystone data aperture for site installation of data

**Mounting:**

PLY is supplied as standard with an integrated steel clamp bracket for through desk or desk edge mounting in desk tops 0.51" - 1.97" thick.

Oversize M8 knurled bolts allow tightening by hand, without tool, and spread clamping force to prevent damage to desk underside.

**Quality and Testing:**

All PLY units are manufactured using ISO9001 quality controlled components and practices and are 100% inspected before shipment.

- Visual: Configuration and appearance
- Power sockets: Continuity, polarity, insulation & grounding
- TUF-R A+C 25W USB charger: Fully function tested, as well as 4 hour "full-load" soak tested"
- Data & AV: 100% continuity tested; all orders are batch tested for performance compliance

**"we test every pin in every socket in every module"**

**Certifications:**

International certifications available on request.