

pathfinder



Complete floor to desk, floor to ceiling, or ceiling to desk,
vertical cable management solution

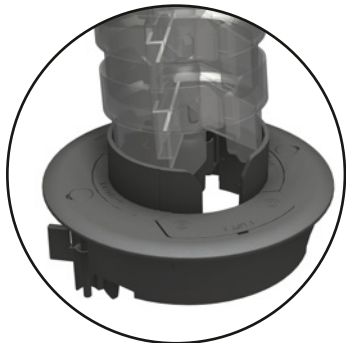
Umbilical

PATHFINDER Top Mount can be: screwed to the underside of a desk top or meeting table; snapped into a .98" (25mm) hole in steel/plastic panels (such as QikTray Adaptor); or, (with integrated wire gripper), used to tension a ceiling hung umbilical

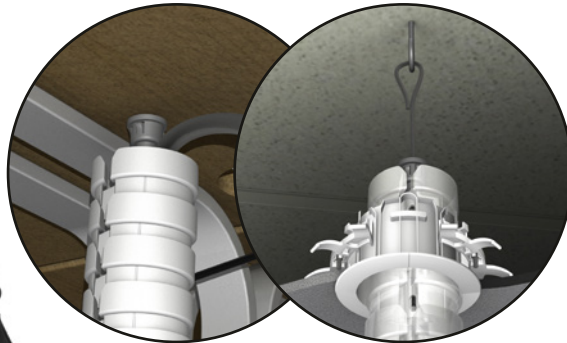
PATHFINDER segment jaws are designed to allow cables to be 'wiped in', or removed easily at any time



PATHFINDER has twin, asymmetric, segregated compartments, each capable of accepting power and data cables, as well as 5/8" (16mm), 3/4" (20mm) and 1" (25mm) flexible conduits

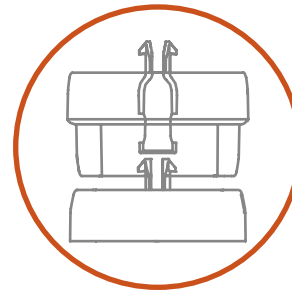


When used with our unique Floor Grommet, PATHFINDER allows **TOTAL CABLE PROTECTION**, unequalled by any other umbilical containment system

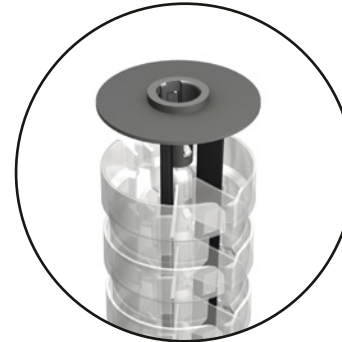


Optional stainless steel cord provides structural support and provides protection for cables from undue tension

Enclosed segments provide improved aesthetics over 'open segment' umbilicals

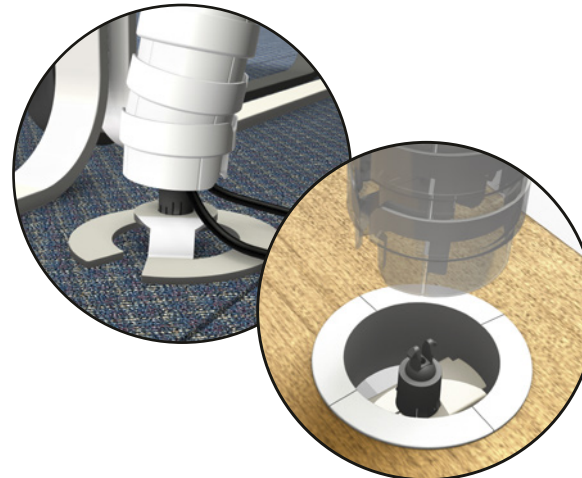


PATHFINDER can be extended on-site, to suit different applications, with a simple "Push & Click"



Where a rigid umbilical-column is required, support rods can be used to limit, or even prevent flexing. This feature also allows users to be creative in the shape of Pathfinder routing ie. spiral

PATHFINDER Bottom Mount can be: screwed to any suitable surface; used with the Pathfinder Weighted Base; or, clipped into the Pathfinder Desk Flange for ceiling hung applications



Zipper

Inserting cables making you mad? ...we've made it as easy as 1, 2, 3

1



2



3



The PATHFINDER system from OE Electrics has been designed from 25 years experience in supplying cable management products, to offer a complete floor to desk, floor to ceiling, or ceiling to desk, vertical cable management solution.

Key Pathfinder features include:

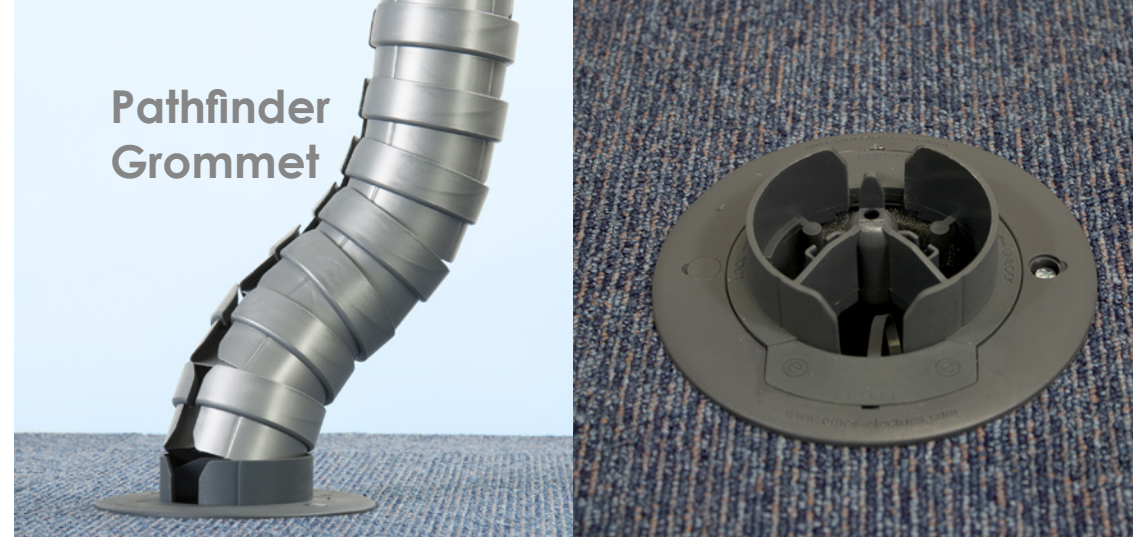
- A unique Pathfinder Grommet for feeding under floor cables directly into the umbilical
- Extendable sections to allow fixed desk, height adjustable desk or ceiling termination
- A wide range of floor, desk and ceiling fixing options to provide total cable management of cables
- Internal segregation for power and data cables to comply with BS regulations
- Flexible umbilical in white or clear polycarbonate

Combine Pathfinder with QikTray cable tray for optimum cable management



**PATHFINDER - safety,
practicality and
aesthetics - combined!**

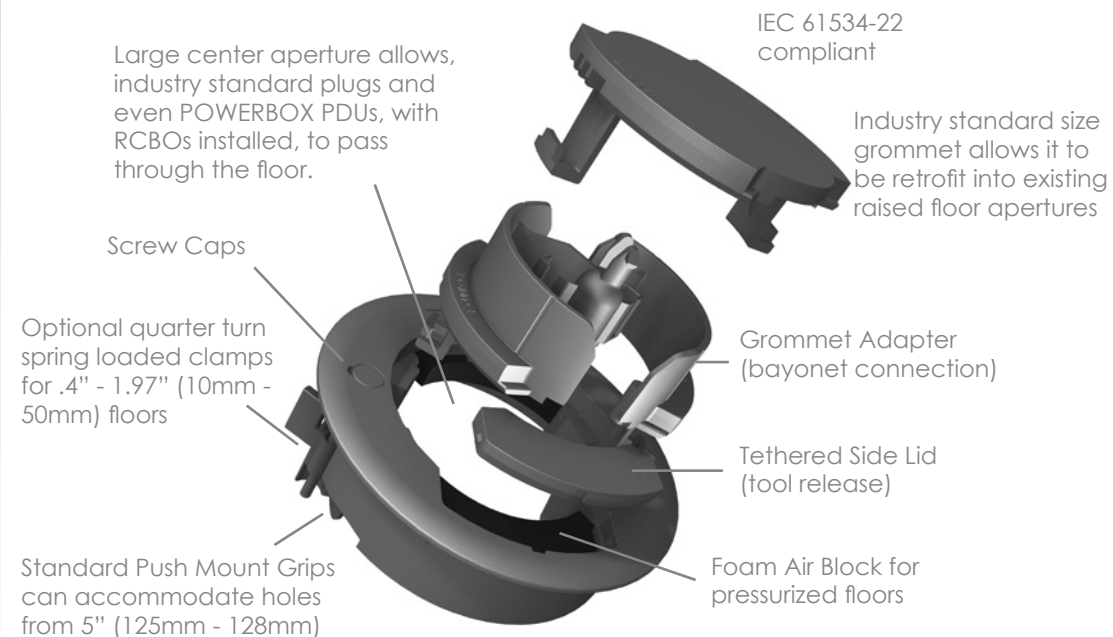
Pathfinder Grommet



PATHFINDER Floor Grommet is the first of its kind to enable **TOTAL CABLE PROTECTION** from desk to underfloor, when used in conjunction with Pathfinder Umbilical.

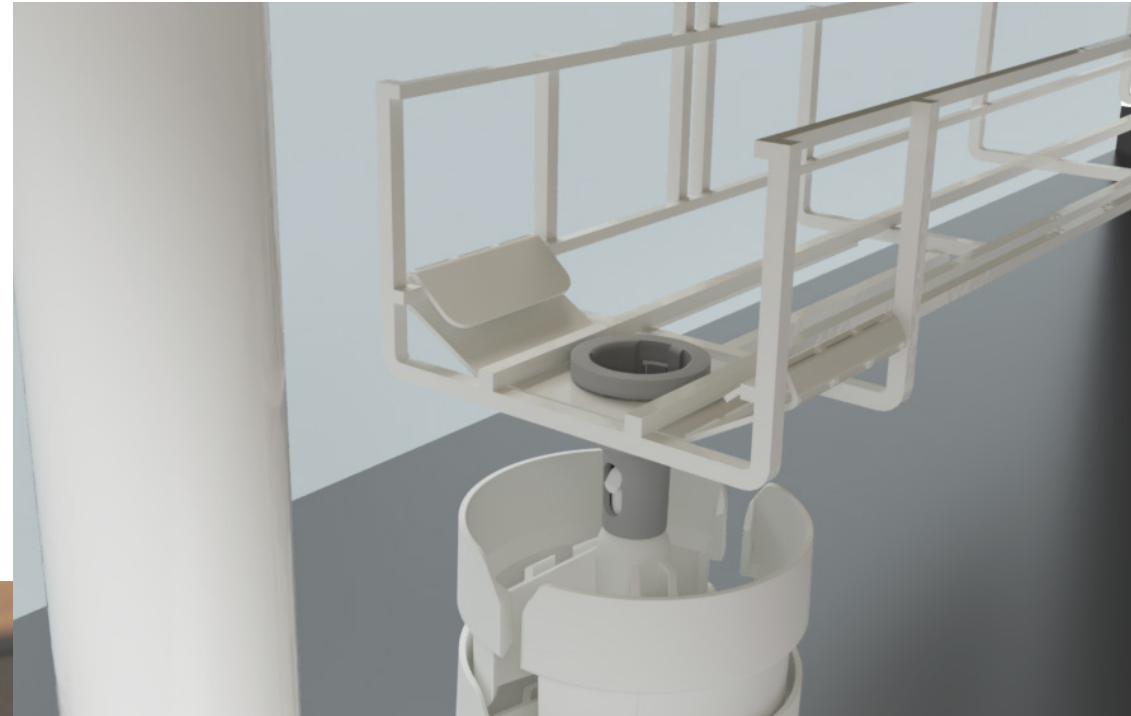
Designed to fit into industry standard 5 inch / 125-128mm cutouts, the Pathfinder Floor Grommet can be used as a conventional floor pass-thru, allowing power / data cabling, including .63" (16mm) flexible conduit, to exit via the Side Lids.

But, if used in conjunction with Pathfinder Umbilical, using Pathfinder Grommet Adaptor, it can even accommodate multiple .8"-1" (20mm / 25mm) data conduits as well.

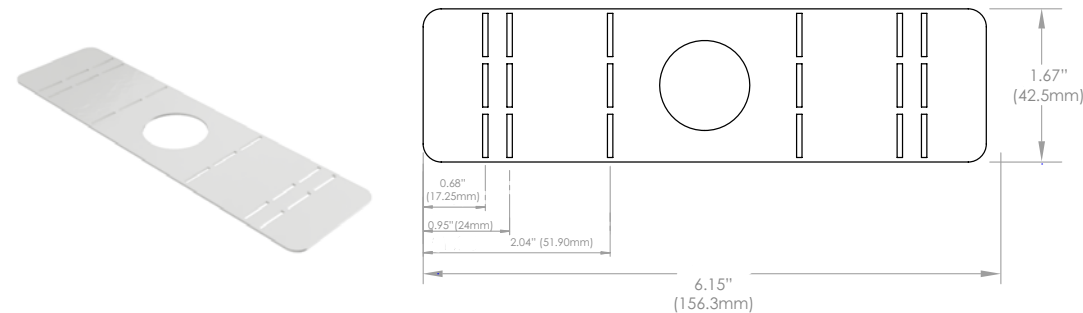




Our PATHFINDER umbilical can be integrated with the EASYCLAMP for floor to desktop cable routing – Using either the Pathfinder's standard mounting or by attaching the Pathfinder directly to EasyClamp.



QikTray Adapter can also be used on compatible trays
Check with OE Electrics outside these sizes for alternative/bespoke bracket





Colors



Available in four standard colors (right).* specialty colors available for Pathfinder segments (other colors are available on request).



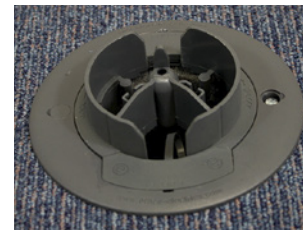
White



Silver



Black



Graphite Grey



Light Grey



White



Silver



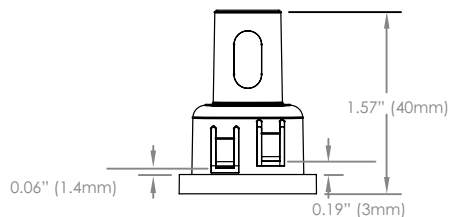
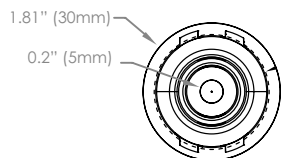
Clear



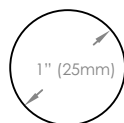
Black

Technical

Top Mount

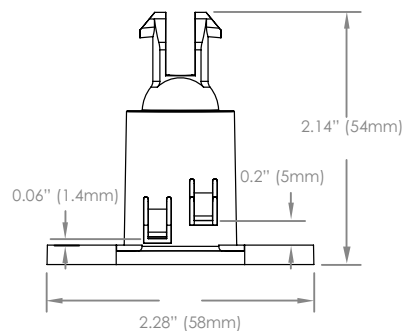
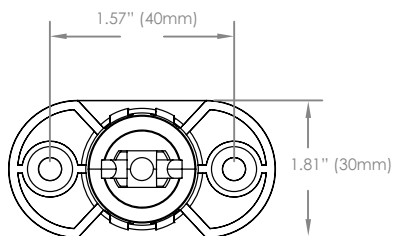


Cutout Dimensions
(both top & bottom
mount)

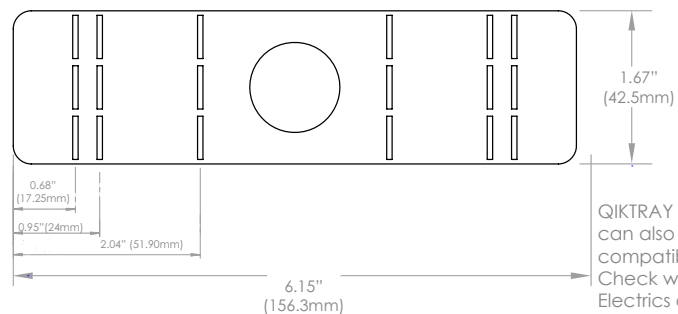


* Optional Panel
Thicknesses

Bottom Mount

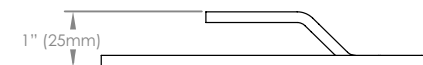
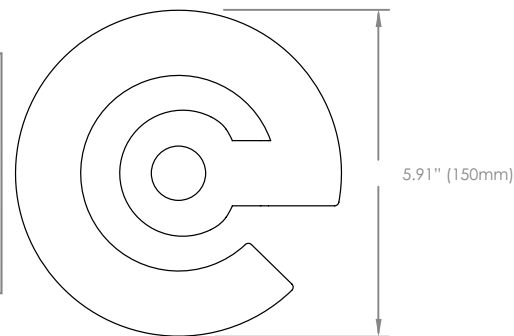


QikTray Adapter

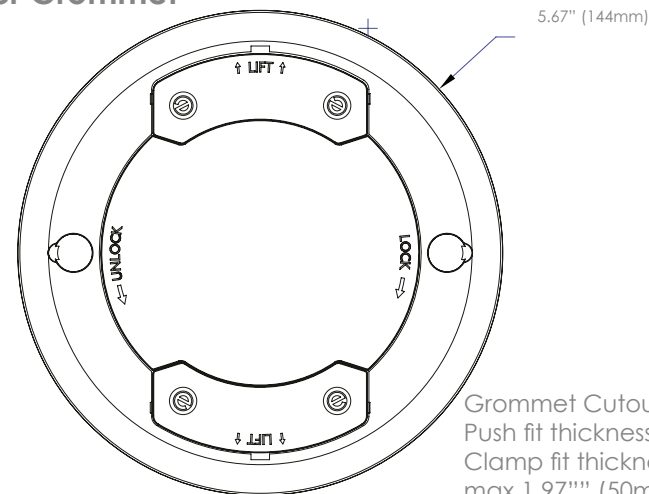


QIKTRAY Adapter
can also be used on
compatible trays
Check with OE
Electrics outside these
sizes for alternative/
bespoke bracket

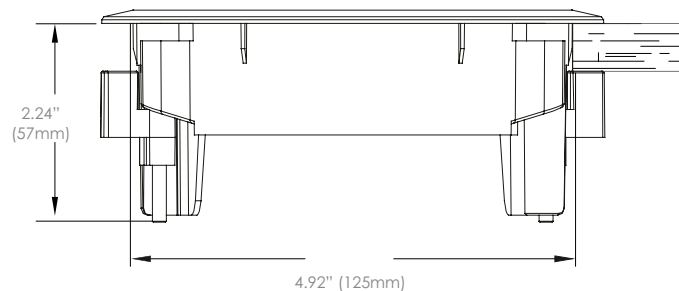
Weighted Base



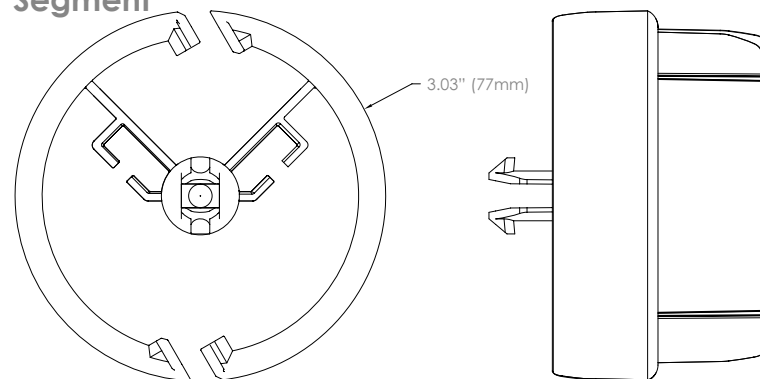
Floor Grommet



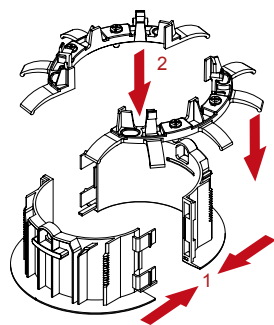
Grommet Cutout 5" (125 - 128mm)
Push fit thicknesses min .4" (10mm)
Clamp fit thicknesses min .4" (10mm) -
max 1.97" (50mm)



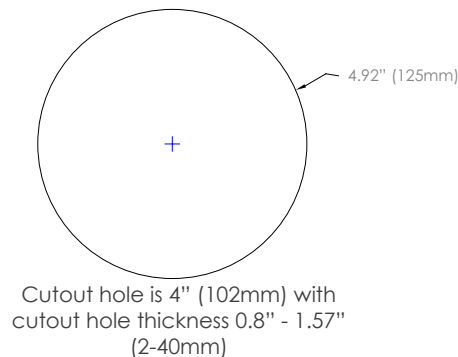
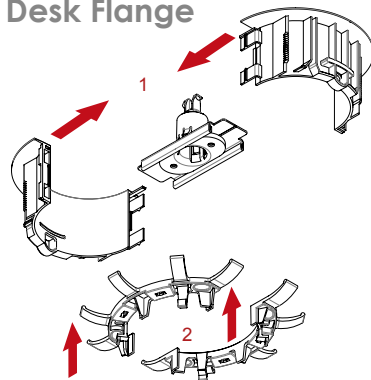
Segment



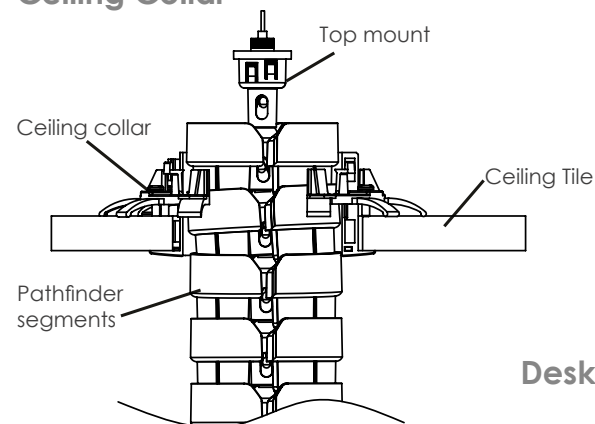
Ceiling Collar



Desk Flange

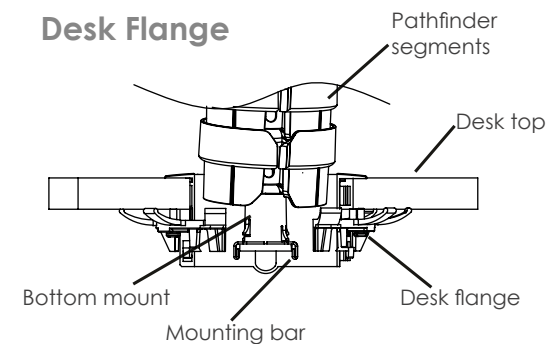


Ceiling Collar



Note: DO NOT hang PATHFINDER from Ceiling Collar, it is only a pass-thru

Desk Flange



Note: DO NOT use Desk Flange upside down to hang from false ceiling tiles

Pathfinder cable and conduit capacities

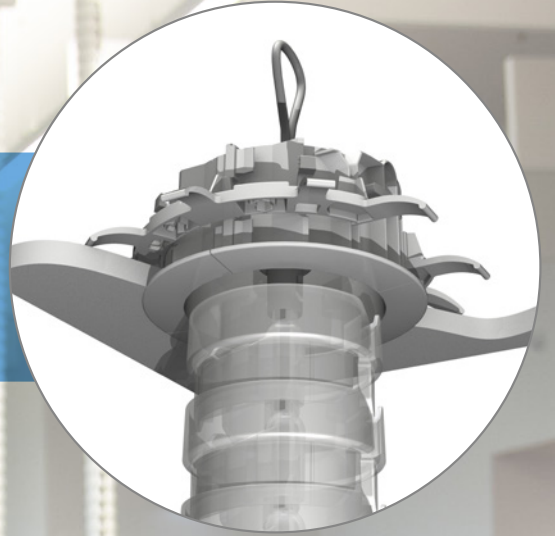
Cable Size	Cable Type	Small compartment	Large compartment	Grommet sides
(OD = Outer Diameter)	(examples)			(each side)
Cables .24" (6mm) OD	eg: CAT5e	9 1	28 1	6 1
Cables .28" (7mm) OD	eg: Cat6	7 1	18 1	3 1
Cables .35" (9mm) OD	eg: 3 core 1.5mm ²	4 1	12 1	3 1
Cables .43" (11mm) OD	eg: 3 core 2.5mm ²	2 1	6 1	2 1
Conduit .63" (16mm) OD	eg: underfloor track tap-off	2 2	5 2	2 2
Conduit .79" (20mm) OD	eg: data conduit	1 23	4 23	0
Conduit .98" (25mm) OD	eg: data conduit	1 23	2 23	0
Note: All capacities reduce if using the Pathfinder Zipper				
Notes: 1 - At 50% fill				
2 - Maximum				
3 - .79" and .98" (20mm/25mm) conduit cannot be inserted with the Zipper				

Ceiling to desk

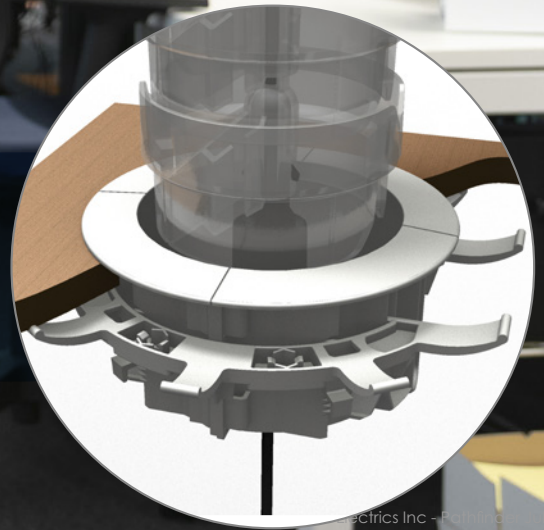
PATHFINDER provides an ideal solution where power and data services are distributed in the ceiling. Using our custom designed Ceiling Collar and Desk Flange, Pathfinder provides TOTAL CABLE PROTECTION from ceiling plenum to QikTray cable tray.

Ceiling to desk umbilicals allow greater freedom for desk positioning (below ceiling apertures), than solid power poles, where CAD floorplans and on-site installation inevitably differ.

PATHFINDER Ceiling Collar gives a clean finished look when Pathfinder drops through false ceilings. Designed to split in half, the Ceiling Collar can be clipped around Pathfinder after it has been hung and cables 'zipped in'.

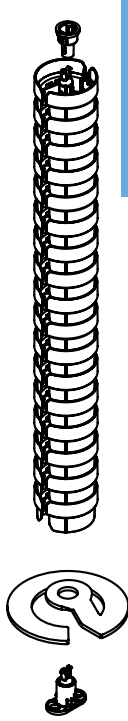


PATHFINDER's Desk Flange simply clips into a 4" (102mm) aperture, securing the base and allowing cables safe passage into QikTray cable tray under the desk.



JUST ENOUGH?

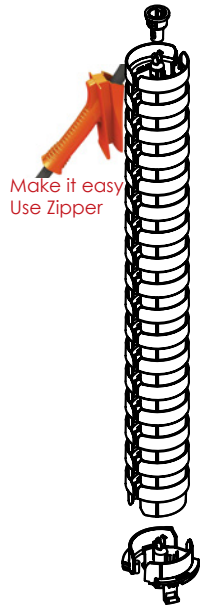
PATHFINDER with Weighted Base protects and manages cables vertically



Floor to desk
PATHFINDER can do both,
the choice is yours!

Common configurations

When considering power and data cables - how much protection is enough?

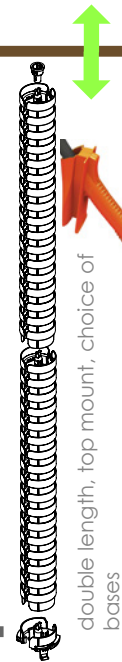


TOTAL CABLE PROTECTION

TOTAL CABLE PROTECTION with PATHFINDER and Pathfinder Grommet



floor to adjustable desk



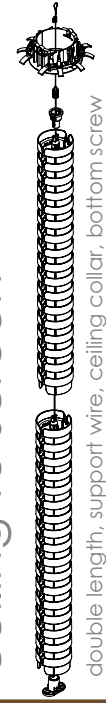
double length, top mount, choice of bases

floor to desk



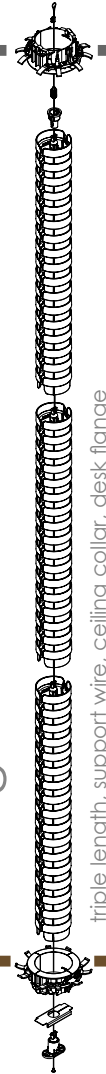
single length, top mount, choice of bases

ceiling to screen



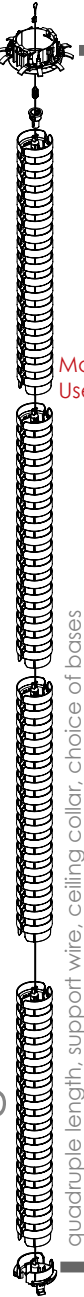
double length, support wire, ceiling collar, bottom screw mount

ceiling to desk



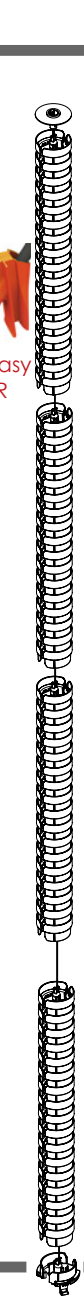
triple length, support wire, ceiling collar, desk flange

ceiling to floor



quadruple length, support wire, ceiling collar, choice of bases

umbili-column



length to suit, 2 x support rods, bottom screw mount / adapter, no top mount required, may need ceiling collar

Make it easy
Use ZIPPER

Make it easy
Use Zipper